



# CONTENTS OF THE ISSUE

New value separator	3
Extension of API function logAccess	4
API function getCarsPosition5	5
WD Fleet – new version	6
Adding a terminal tab in vehicle settings	7
Option to set the format of additional text	8
Option to set the map drawing level in Sygic	9
Optimization of transit points	10
Damage control for Sygic maps	11
New version of WD Fleet Updater	12
Additional customizations of the WD Fleet app	15
End	16



Editorial Office  
Address:  
Princip a.s.  
Hvězdova 1689/ 2a  
140 00 Praha 4 – Nusle

Redakční email:  
[webdispecink.tlm@eurowag.com](mailto:webdispecink.tlm@eurowag.com)

# NEWS – New value separator

In import bridges a new option has been added to separate values by "tab" (tab = \t).

The screenshot shows a web browser window with the URL [https://www.webdispecink.cz/editace\\_nastav...](https://www.webdispecink.cz/editace_nastav...). The page title is 'Files with fuelling:'. The form contains the following fields:

- Name:
- Description:
- File type:
- Encryption:
- Value separator:  (tabulator = \t) - This field is highlighted with a red box.
- datum1:
- datum2:
- datum3:
- datumcas1:
- datumcas2:
- datumcas3:
- datumcas4:
- datumcas5:
- day:
- month:
- year:

# NEWS – Extension of API function log Access

The API function `logAccess` has been extended by new output parameters.

Parametr	Popis
companyId	id firmy
userId	id uživatele
driverId	id řidiče <ul style="list-style-type: none"><li>API funkce na pozadí dohledá Id řidiče pomocí osobního čísla evidovaného u uživatele a hledá řidiče se stejným osobním číslem</li><li>Pokud API funkce přes osobní číslo dohledá více řidičů nebo žádného, pak vrátí prázdný element</li><li>Mobilní aplikace na prázdný element reaguje tak, že zobrazí speciální obrazovku a uživatel musí zadat osobní číslo ručně</li></ul>
userActiveFrom	datum a čas začátku platnosti uživatele
userActiveTo	datum a čas konce platnosti uživatele, pokud není vyplněno, pak se vrátí prázdný element.

```
cookies Headers (6) Test Results
Raw Preview Visualize XML
?xml version="1.0" encoding="UTF-8"?
<SOAP-ENV:Envelope xmlns:SOAP-ENV="http://schemas.xmlsoap.org/soap/envelope/" xmlns:ns1="urn:
<SOAP-ENV:Body>
  <ns1:_logAccessResponse>
    <return>
      <Logged>1</Logged>
      <CurrentVersion>0</CurrentVersion>
      <Mess/>
      <CompanyId>1</CompanyId>
      <UserId>113522</UserId>
      <DriverId>788777</DriverId>
      <UserActiveFrom>2017-09-01 00:00:00</UserActiveFrom>
      <UserActiveTo>2024-09-01 00:00:00</UserActiveTo>
    </return>
  </ns1:_logAccessResponse>
</SOAP-ENV:Body>
</SOAP-ENV:Envelope>
```

# NEWS – API function getCarsPosition5

API function `getCarsPosition5` has been extended by 2 output parameters.

Parametr	Popis
kmFms	kilometry z FMS
kmFmsPostime	čas odesláni jednotkou

```
1 <?xml version="1.0" encoding="UTF-8" ?>
2 <Envelope xmlns="http://schemas.xmlsoap.org/soap/envelope/">
3 <Body>
4 <n1:getCarsPosition5 xmlns="urn://api.webdispecink.cz/webdisser_02">
5 <code>14.042037</code>
6 <username>
7 <password>
8 <timestamp>2023-03-15 11:32:39</timestamp>
9 </n1:getCarsPosition5>
10 </Body>
11 </Envelope>

Body Cookies Headers (0) Test Results

Pretty Raw Preview Visualize XML

9 <code>14.042037</code>
10 <positiontime>2023-03-15 11:32:39</positiontime>
11 <localpostime>2023-03-15 12:32:39</localpostime>
12 <speed>85</speed>
13 <location>
14 <location_state></location_state>
15 <location_city></location_city>
16 <location_street></location_street>
17 <input1>67</input1>
18 <input2>67</input2>
19 <input3>9</input3>
20 <input4>67</input4>
21 <ac_dallas>C2800000000109N003</ac_dallas>
22 <km>453855.59</km>
23 <usedfuel>110247.5</usedfuel>
24 <mh>3618871</mh>
25 <fuel>1156.4</fuel>
26 <kmFms>453855.585</kmFms>
27 <kmFmsPostime>2023-03-15 11:32:39</kmFmsPostime>
28 </item>
29 </return>
30 </n1:getCarsPosition5Response>
```

## NEWS – WD Fleet – new version

In the next few days, we'll have a new version of the app, **WD Fleet 1.6.0** ready for you on the Play Store, where we've incorporated some of your requests and fixed some bugs to make the app more stable.

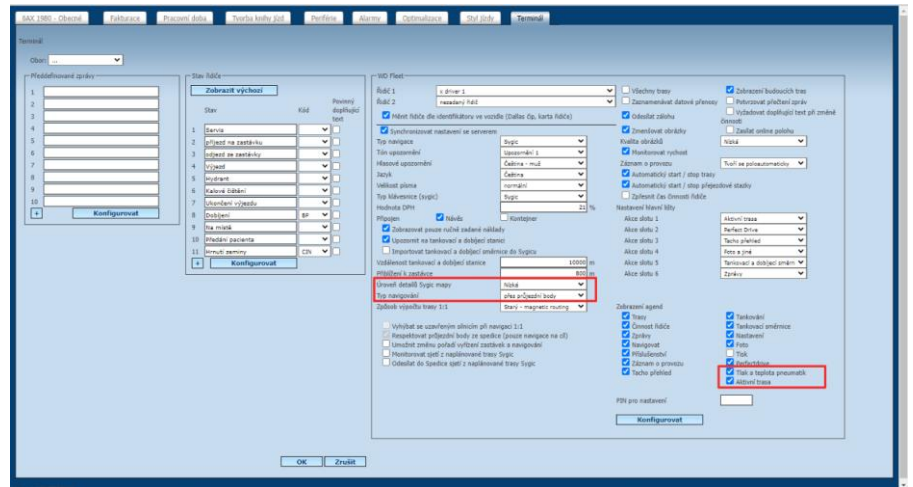
The changes are described below:



# NEWS – Adding a terminal tab in vehicle settings

We have added more settings from WD Fleet to the terminal tab, specifically:

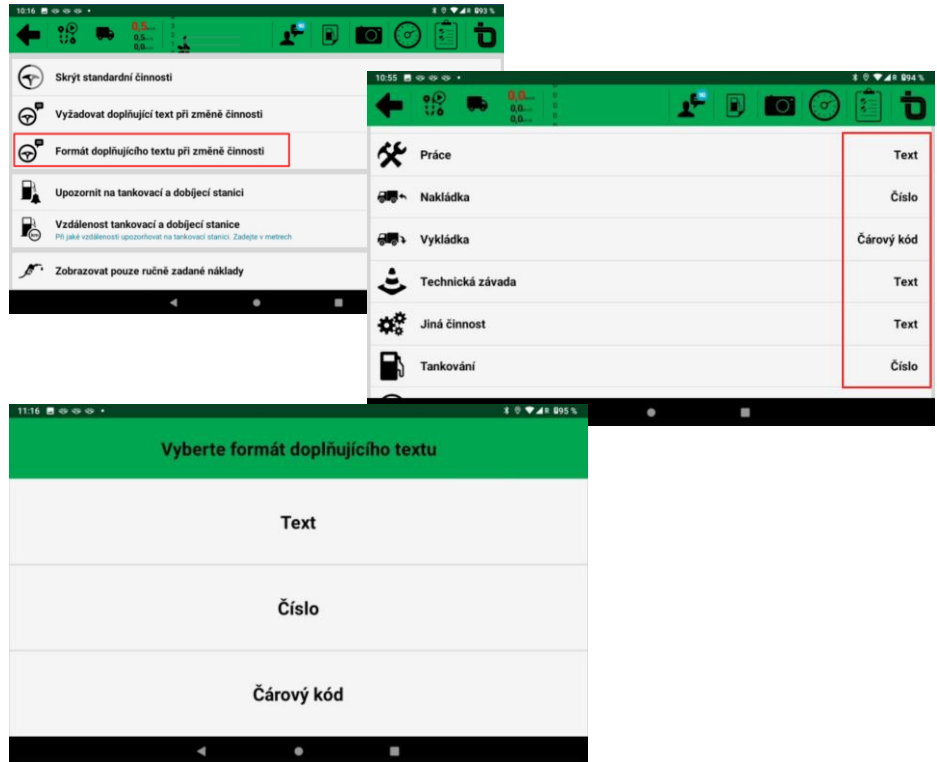
- Tire temperature and pressure
- Active route
- Sygic map detail level
- Rename the " Check-points" setting to "Navigation type"



## NEWS – Option to set the format of additional text

When creating a trail, you can enter additional text for each activity. It is now possible to set the format of the additional text, specifically

- Text - possibility to enter any text, becoming a functional feature
- Number - possibility to enter a number
- Barcode - scanning a barcode (or more) for an operation

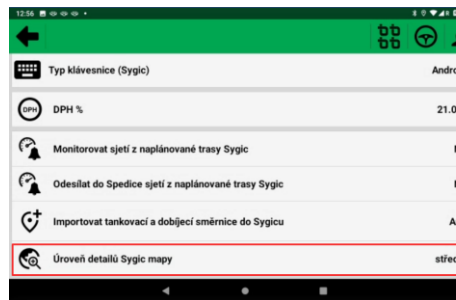




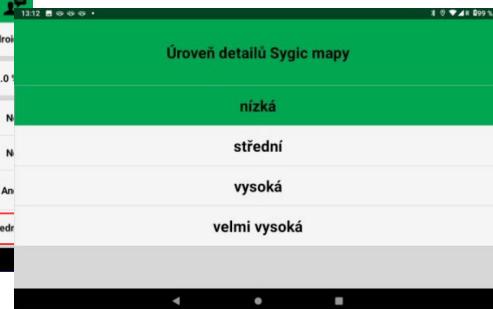
## NEWS – Option to set the map drawing level in Sygic

For use on older tablets or tablets with lower graphics performance, we now allow you to set the "Sygic map detail level" in "Settings" - "Device settings".

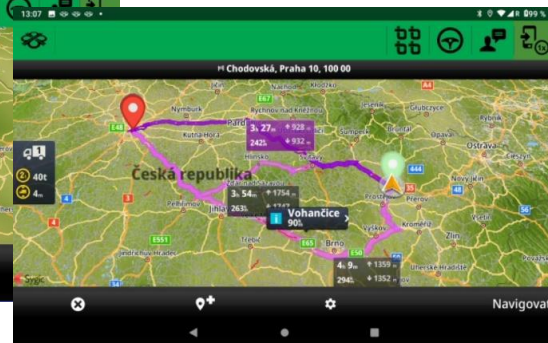
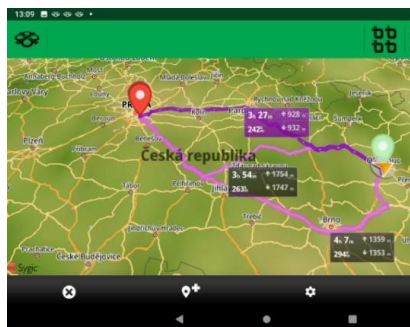
Where you observe a slow-down in map drawing - especially when zooming out the route view - we recommend using a lower level of drawing detail on the map.



Nízká



Vysoká

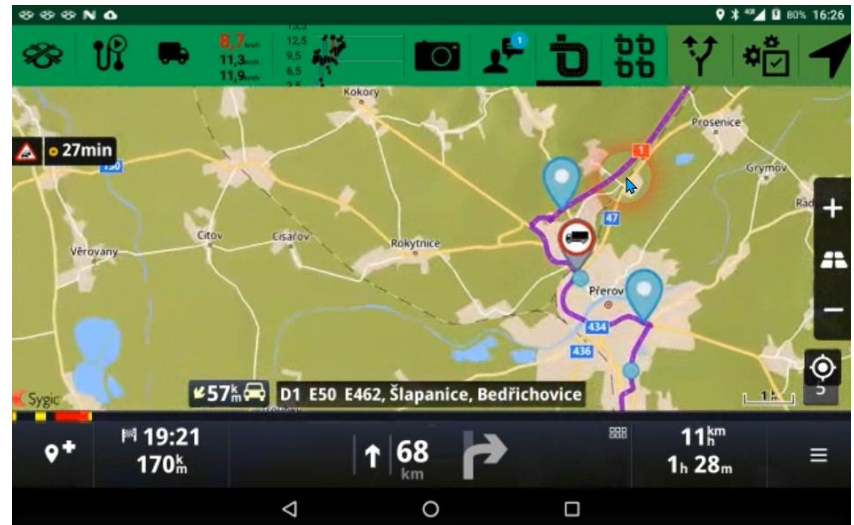


## NEWS – Optimization of transit points

When using navigation through checkpoints, in selected cases (especially when sending a smaller number of checkpoints from external IS), the selection of checkpoints was optimized regard to the current location.

To ensure that all checkpoints are always respected, it is now possible to set whether the selection of checkpoints should be done or not.

In "Settings" - "Setting basic functions" - it is possible during "Navigation type" - "Navigate via checkpoints" to set also the parameter "Select checkpoints according to current position" = Yes/No

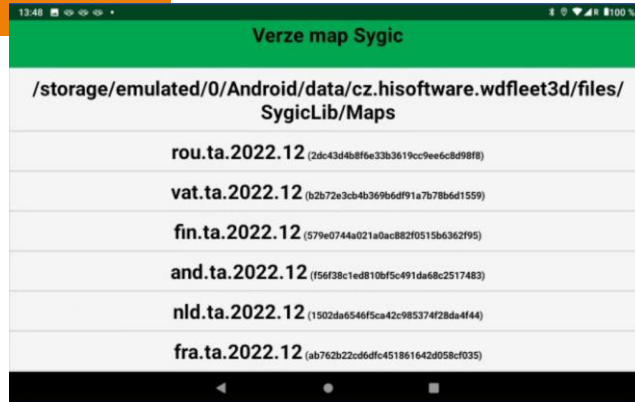


## NEWS – Damage control for Sygic maps

When downloading new Sygic maps, or when using them (frequent crashes, etc.), we have experienced damage to integrity of some maps.

On the outside, the map looks fully functional and the navigation works properly.

However, occasionally there is a crash and the cursor will turn location gray or appear off the road.



If this is the case, we recommend deleting the map and downloading a new one via WIFI.

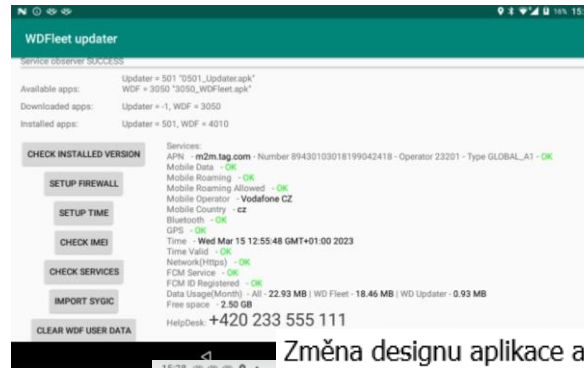
For checking, we have then given the maps a unique code - thanks to this we are able to tell whether the maps are damaged or not.

The codes can be found for each map in "Settings" - "Application and device information" - "Sygic map version". If you experience a problem during navigation, please consult this with our support team, who will check the consistency of the individual map codes.

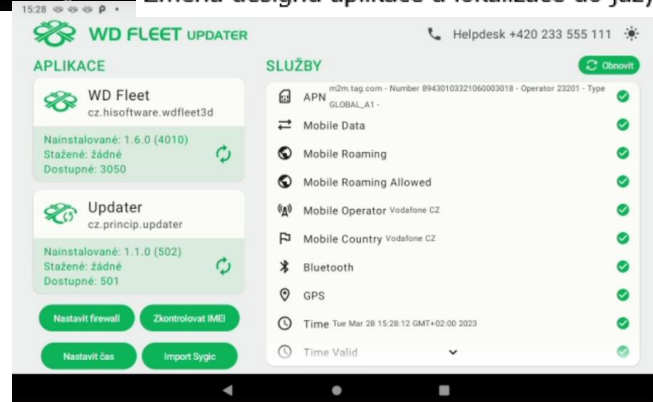
# NEWS – New version of WD Fleet Updater

For users of image tablets - Eurowag's solution is introducing a major change to the graphical interface and functions of the WD Fleet Updater application, which is used to manage the tablet, upgrade the WD Fleet application and also to check and log the operation of the tablet.

## Původní verze WD Fleet Updater



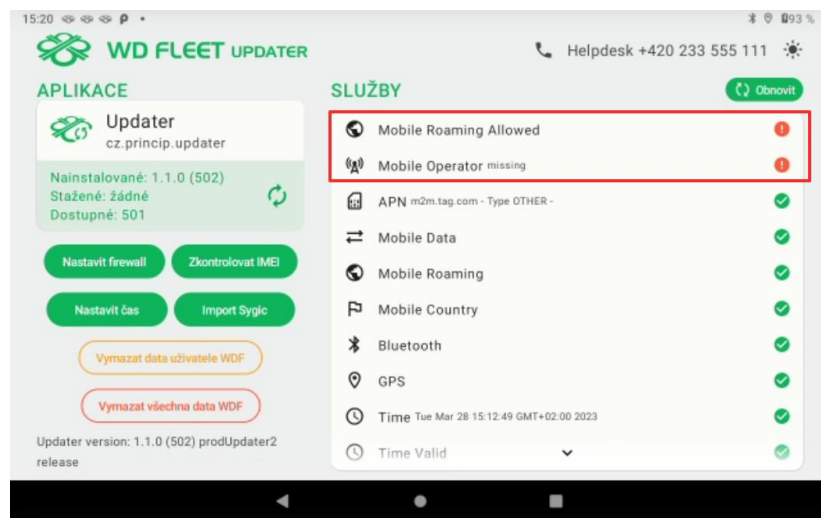
Změna designu aplikace a lokalizace do jazyka tabletu



## NEWS – New version WD Fleet Updater

V případě jakékoliv chyby (ztráta připojení, GPS apod.) se všechny problémové služby objeví v horní pravé části seznamu služeb (červené kolečko s vykřičníkem) a lze tak jednoznačně identifikovat možný problém.

Služby označené zeleným kolečkem jsou plně funkční.



## NEWS – New version WD Fleet Updater

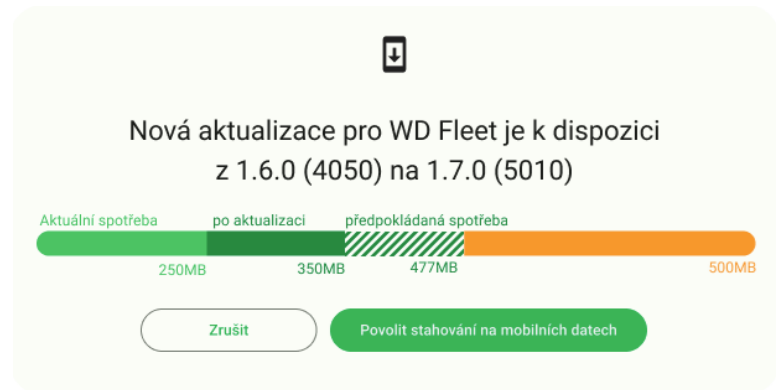
In application WD Fleet Updater was also incorporated logic for updating the application WD Fleet (and WD Fleet Updater) on data.

When releasing a new version, the tablet will no longer need to be connected to WIFI.

This will speed up updates and possible repairs of the application, even in the field.

The user/driver will be notified that a new version of the application has been released, then we will display the status of data usage, including the prediction of usage until the end of the calendar month, and if the data package is not used up, he/she will be able to update the data.

Please note for tablets with a tariff of up to 150 MB, updates will still need to be done on the WIFI.





## NEWS – Additional customizations of the WD Fleet app

1. Integration of new Sygic version 22.3.4 - the latest Sygic navigation libraries have been integrated
2. If the location of the last stop is identical to the destination, the Navigate to destination dialog is no longer displayed.
3. In the context of creating automatic and semi-automatic paths, dialogs that did not have a timer and remained permanently displayed were removed. Now each dialog has its own timer for 30 seconds and then the dialog is hidden.

4. Translations into all languages have been added for the Handling action at each stop
5. A number of modifications have been made to increase the stability of the application.



END

We hope that you have found useful information in the articles in this issue of the magazine that will make working with your fleet even easier.

Thank you for your trust.

## KONTAKTY

### System provider

PRINCIP a.s.  
Hvězdova 1689/ 2a  
140 00 Praha 4 - Nusle  
IČ 41690311 DIČ CZ41690311

### Opening hours:

Po - Čt 07:30 – 16:30  
Pá 07:30 – 16:30

### Software technical support

PRINCIP a.s. – Olomouc office  
Ladova 389/10  
779 00 Olomouc  
tel. +420 233 555 111  
e-mail  
[webdispecink.tlm@eurowag.com](mailto:webdispecink.tlm@eurowag.com)  
[www.webdispecink.cz](http://www.webdispecink.cz)

